

Specification sheet LX 887

Roof drainage systems made of galvanized steel, Series O

Main drainage	
Gravity flow	
Silent Power	
Discharge rate:	4,6 l/sec
Water height:	35 mm
Roof penetration:	-
Diameter:	DN 70
LX-Number:	LX 887
Weir height:	0 mm
Drain:	ventilated
Downpipe:	not ventilated
Downpipe height:	4,2 m
Drainage:	in sewer

LX 887 Piece list

1 x Art.-No. choose drain on page two!

1 x Art.-No. 01201.070X, LORO-X Pipe with one socket

2 x Art.-No. 00300.070X, LORO-X Bend

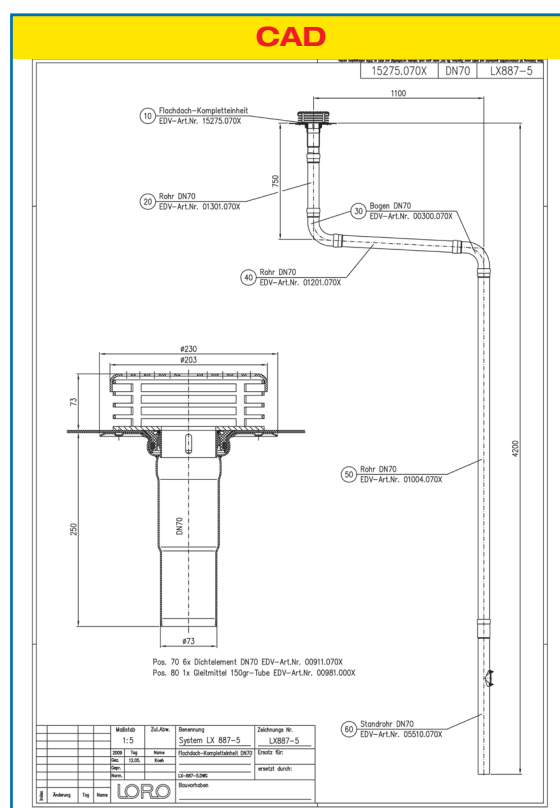
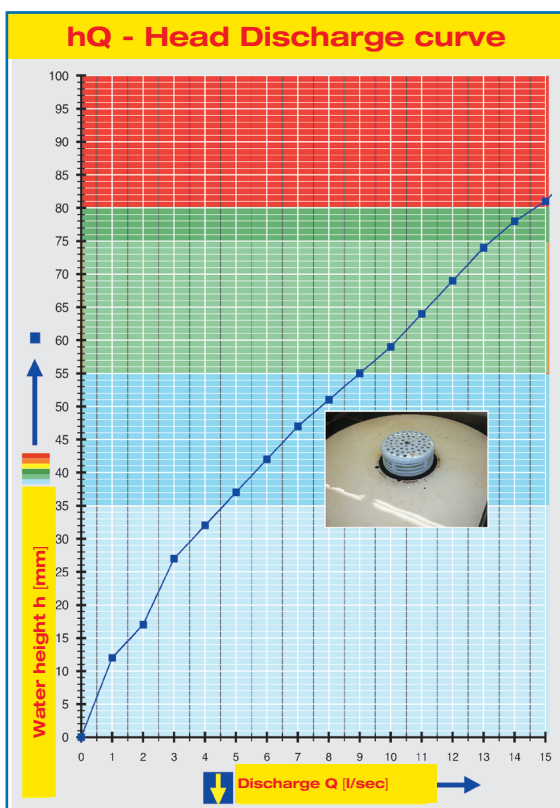
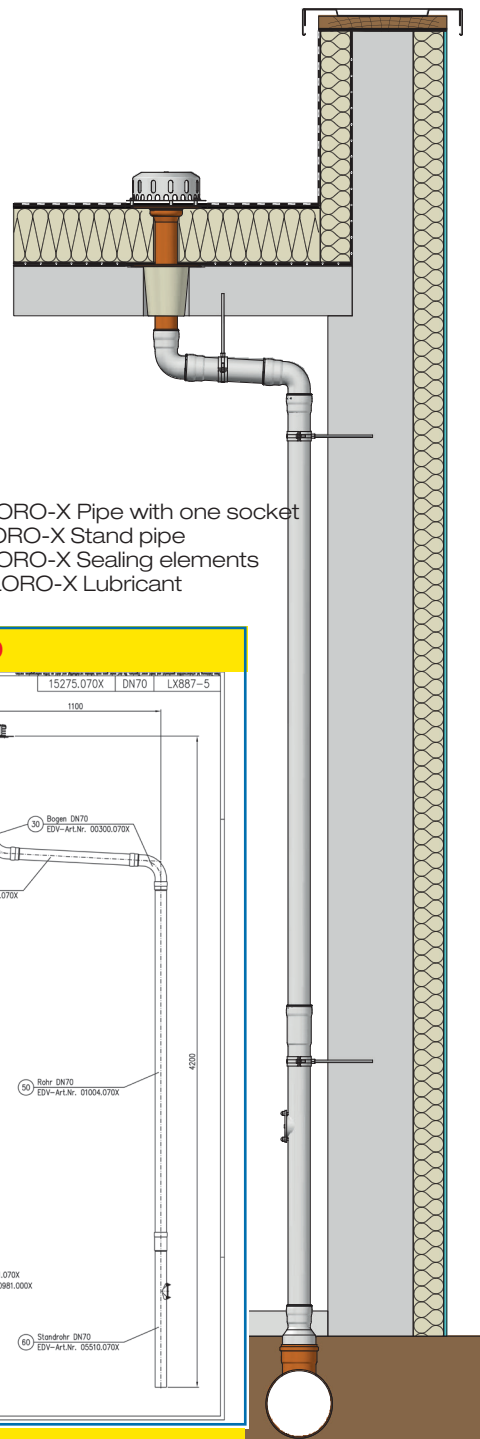
1 x Art.-No. 01201.070X, LORO-X Pipe with one socket

1 x Art.-No. 01004.070X, LORO-X Pipe with one socket

1 x Art.-No. 05510.070X, LORO-X Stand pipe

6 x Art.-No. 00911.070X, LORO-X Sealing elements

1 x Art.-No. 00986.000X, LORO-X Lubricant



Systempower

Systemshape

Water height	mm	5	10	15	20	25	30	35	40	45	50	55	60	65	70	75
Discharge	l/sec		0,8	1,1	2,3	2,8	3,6	4,6	5,5	6,5	7,7	9	9	10,1	12,1	13,2
Silent Power																

Choose drain for piece list on page one!

DN 70

without thermal insulation

LX887-5X

Drain Art.-No. 15275.070X

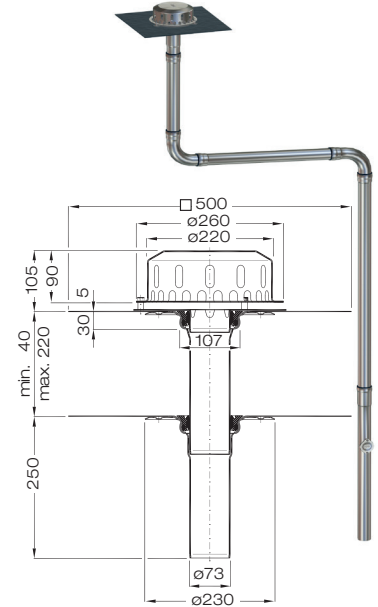
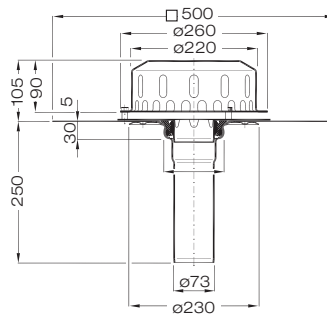
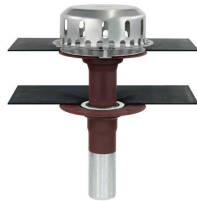
Series O
**one-piece
connection sleeve**



LX887-6X

Drain Art.-No. 15285.070X

Series O
**two-piece
connection sleeve**



with thermal insulation

LX887-7X

Drain Art.-No. 15375.070X

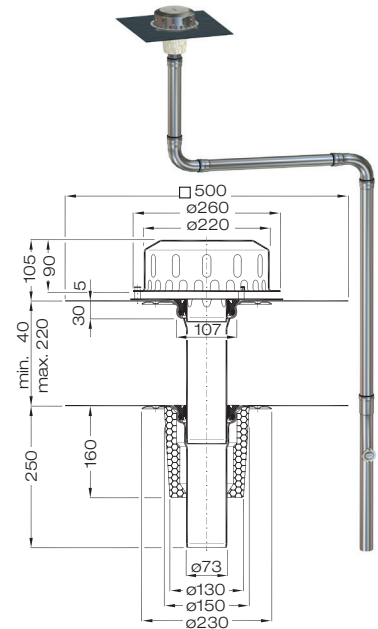
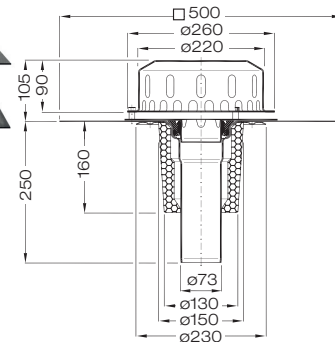
Series O
**one-piece
connection sleeve**



LX887-8X

Drain Art.-No. 15385.070X

Series O
**two-piece
connection sleeve**



Heat tracing: Lorowerk recommends to check all drains and pipes with regard to their frost-sensibility. Where necessary, these parts should be upgraded with heat tracing.